

Edmonton Observed



Observing Edmonton

I was born in Holland. The small village where I lived was very old and the roads were paved in bricks. My family immigrated to Canada in 1955, ending up in Camrose, a small town without sidewalks and paved roads at the time. This was a contrast that tells a lot about the physical culture I value. I was comfortable with my European culture and this new land was unfamiliar and very young.

The culture of Edmonton is not easily defined. Our recent history is only 130 years old. When I purchased the building on Whyte Avenue that was to become the Red Gallery, I walked to the studio from my home nearby and even sidewalks were missing in 2001. Over the years, I have observed and documented the city through painting. This view of the culture of Edmonton is from a personal perspective. The images reflect a very human, diverse and eclectic city, including both savoury and unsavoury aspects. It is an affectionate portrayal of my home.

Christl Bergheim



The former Red Gallery



In 1969, 104 Avenue downtown was adjacent to the CNR railway corridor. It was interestingly lined with box cars, weeds and piles of colourful oil drums.



David's photos from 1969



#295 Oil Drums 1 32"x48" oil on canvas 2004

104 Avenue in 1969.



#299 Oil Drums 2 48"x24" oil on canvas 2004



Photos by David Murray 1969

An exhibition at the Red Gallery
in 2004



This image is from my daily
winter walk to the Gallery.



#353 Sludge on Whyte 54"x64" oil on canvas 2012



#298 Tim Horton Litter 1 20"x20" oil on canvas 2004



#299 DuMaurier Litter 2 20"x20" oil on canvas 2004



#302 Golden Arches Litter 2 20"x20" oil on canvas 2004

On my daily walk to the Red Gallery, I would come across litter that could be seen anywhere.
One day, historians will find this trove of recognizable litter interesting.

A bicycle on the High Level



A bicycle on Whyte Avenue



368 Bicycle July 1st oil on canvas 16"x20" 2012



#93 High Level Cyclist 54"x64" oil on canvas 1999



#339 High Level Bridge In 16"x24" 2006



#338 High Level Bridge Out 16"x24" 2006



#301 Low Level Bridge 36"x48" oil on canvas 2004

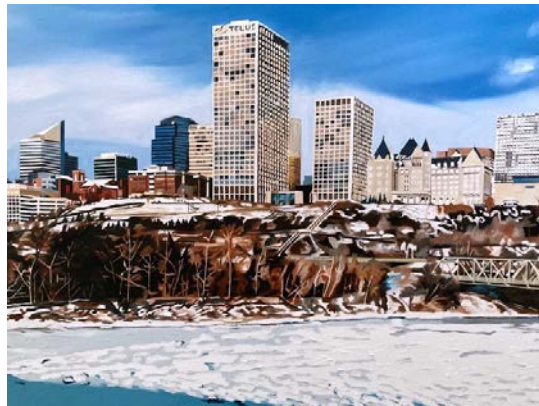
Walterdale:
A bridge that did not survive progress



#360 Dead Bridge 16"x24" oil on canvas 2011



#304 North Saskatchewan River 30"x108" oil on canvas 2005





#300 Safeway 36"x48" oil on canvas 2004



#297 Mill Creek Trail 48"x36" oil on canvas 2003



#298 Carrie at Mill Creek Pool 24"x36" oil on canvas 2003



Mill Creek Pool
City of Edmonton Archives



#266 Ravine Stairs 12"x12" oil on canvas 1999



#305 King Edward Tree 89"x55" oil on canvas 2004



King Edward School, 1926, when these iconic trees had barely started to grow



#347 Alberta Legislature 18"x24" oil on canvas 2008

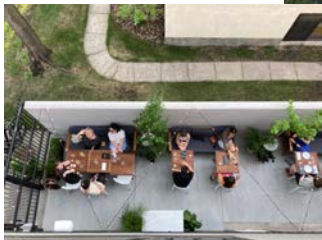
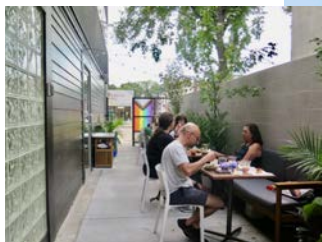
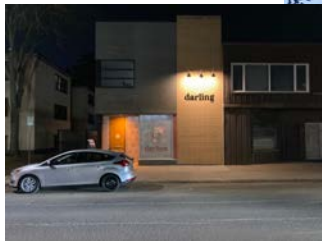


343 Yellow Car 16"x24" oil on canvas 2008



342 Procor 16"x24" oil on canvas 2008

The culture of Edmonton is transforming.



Edmonton's Whyte Avenue Mill Creek Neighbourhood 2024